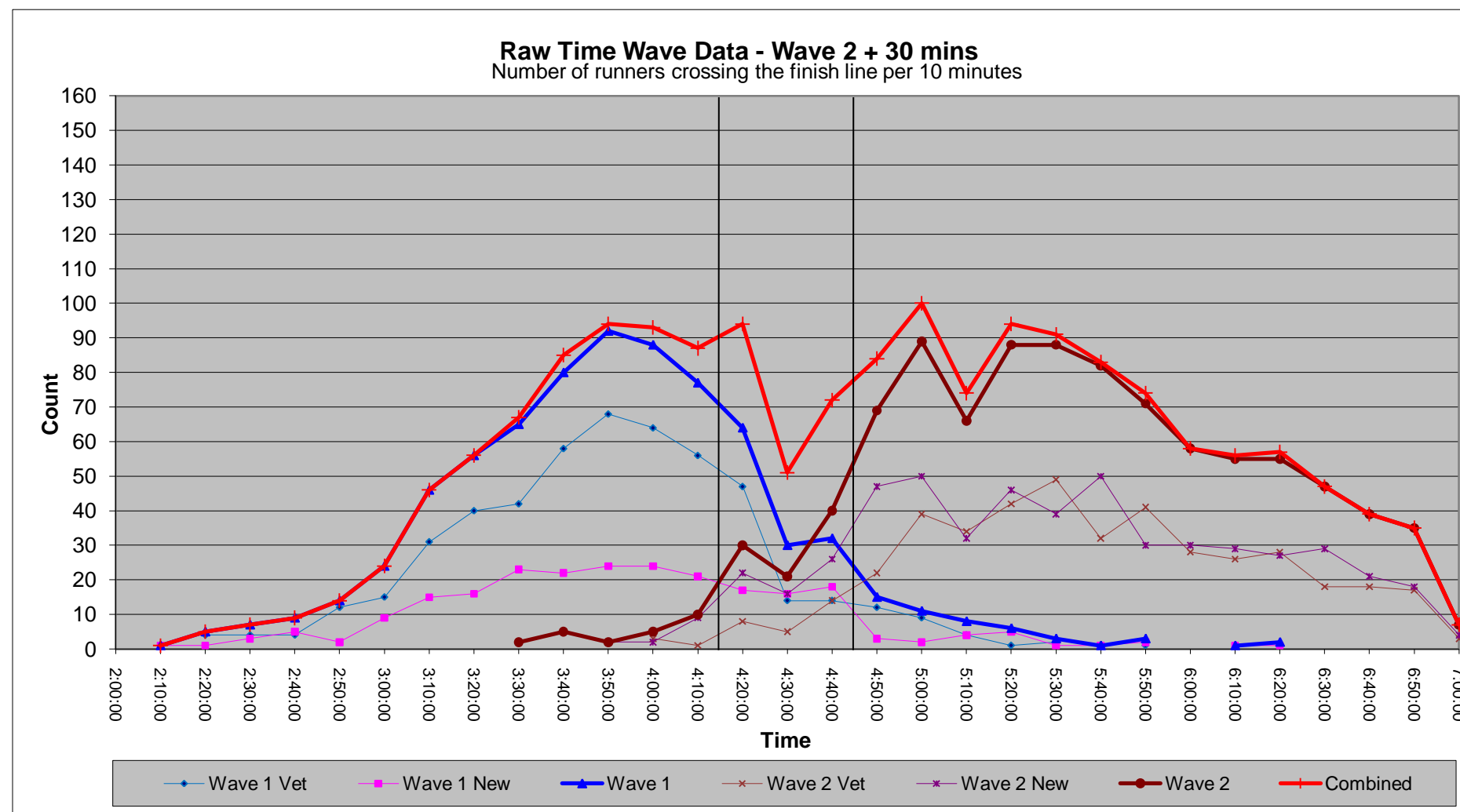


## 2011 Ascent

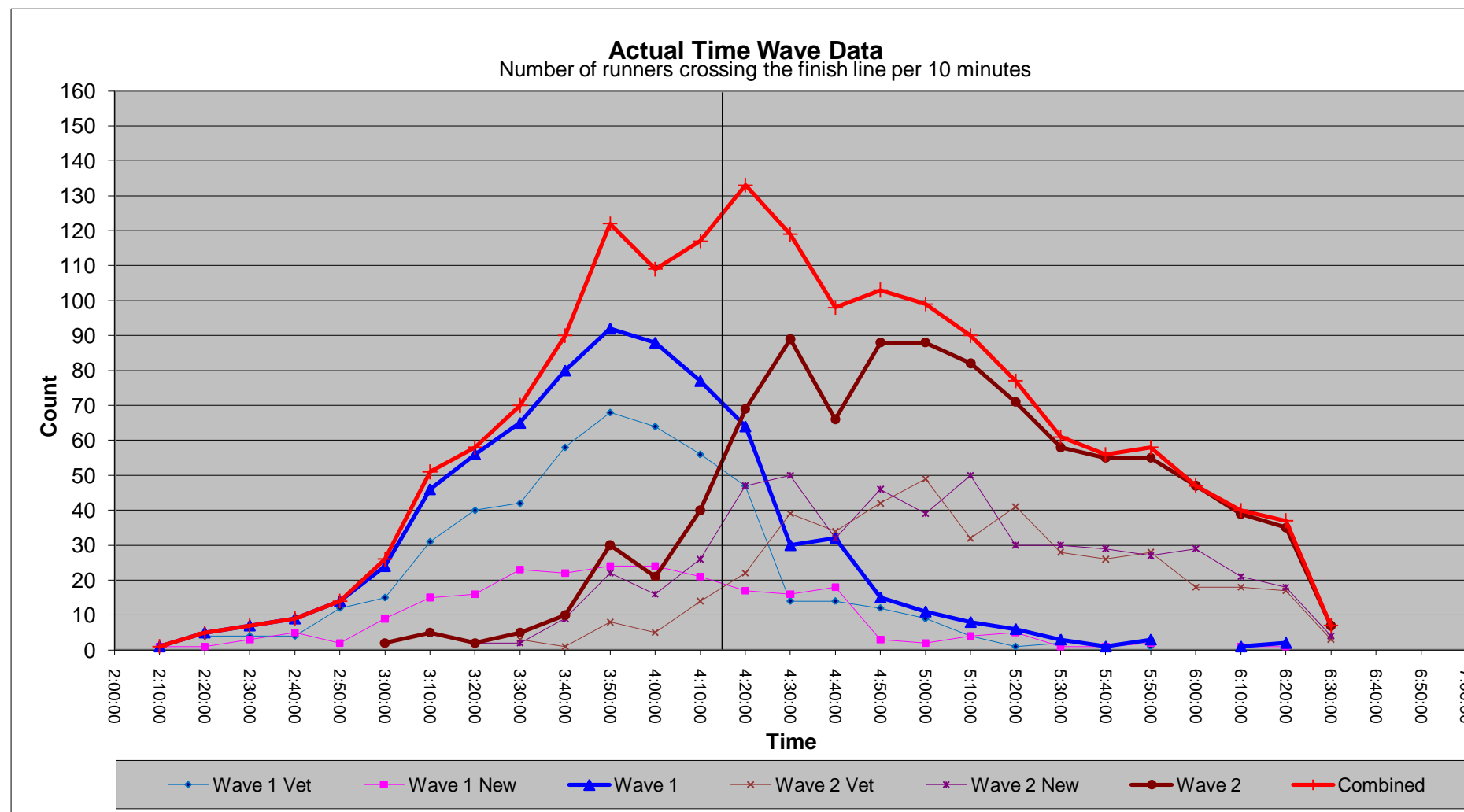
### Raw Time - Wave 2 + 30 mins

Time	W1 Vet	W1 New	W1	W2 Vet	W2 New	W2	Combined
2:10:00		1	1				1
2:20:00	4	1	5				5
2:30:00	4	3	7				7
2:40:00	4	5	9				9
2:50:00	12	2	14				14
3:00:00	15	9	24				24
3:10:00	31	15	46				46
3:20:00	40	16	56				56
3:30:00	42	23	65		2	2	67
3:40:00	58	22	80		5	5	85
3:50:00	68	24	92		2	2	94
4:00:00	64	24	88	3	2	5	93
4:10:00	56	21	77	1	9	10	87
4:20:00	47	17	64	8	22	30	94
4:30:00	14	16	30	5	16	21	51
4:40:00	14	18	32	14	26	40	72
4:50:00	12	3	15	22	47	69	84
5:00:00	9	2	11	39	50	89	100
5:10:00	4	4	8	34	32	66	74
5:20:00	1	5	6	42	46	88	94
5:30:00	2	1	3	49	39	88	91
5:40:00		1	1	32	50	82	83
5:50:00	1	2	3	41	30	71	74
6:00:00				28	30	58	58
6:10:00		1	1	26	29	55	56
6:20:00	1	1	2	28	27	55	57
6:30:00				18	29	47	47
6:40:00				18	21	39	39
6:50:00				17	18	35	35
7:00:00				3	4	7	7
Totals	503	237	740	428	536	964	1704
DNF	2	6	8	43	41	84	92
Runners	505	243	748	471	577	1048	1796



### Actual Time

Time	W1 Vet	W1 New	W1	W2 Vet	W2 New	W2	Combined
2:10:00		1	1				1
2:20:00	4	1	5				5
2:30:00	4	3	7				7
2:40:00	4	5	9				9
2:50:00	12	2	14				14
3:00:00	15	9	24		2	2	26
3:10:00	31	15	46		5	5	51
3:20:00	40	16	56		2	2	58
3:30:00	42	23	65	3	2	5	70
3:40:00	58	22	80	1	9	10	90
3:50:00	68	24	92	8	22	30	122
4:00:00	64	24	88	5	16	21	109
4:10:00	56	21	77	14	26	40	117
4:20:00	47	17	64	22	47	69	133
4:30:00	14	16	30	39	50	89	119
4:40:00	14	18	32	34	32	66	98
4:50:00	12	3	15	42	46	88	103
5:00:00	9	2	11	49	39	88	99
5:10:00	4	4	8	32	50	82	90
5:20:00	1	5	6	41	30	71	77
5:30:00	2	1	3	28	30	58	61
5:40:00		1	1	26	29	55	56
5:50:00	1	2	3	28	27	55	58
6:00:00				18	29	47	47
6:10:00		1	1	18	21	39	40
6:20:00	1	1	2	17	18	35	37
6:30:00				3	4	7	7
Totals	503	237	740	428	536	964	1704
DNF	2	6	8	43	41	84	92
Runners	505	243	748	471	577	1048	1796



Runners who ran where they were supposed to - Wave 1 < 4:15, Wave 2 > 4:15 act / 4:15 raw

1413 82.9%

Runners who ran slow but did not have to be passed by Wave 2 runners running Wave 2 times

126 7.4%

Runners who ran faster than Wave 2 times and had to pass Wave 1 runners

115 6.7%

Runners who had to be passed by Wave 2 runners running Wave 2 times

50 2.9%

Breakdown:  
 Had legit GOG time: 5  
 Had legit 1/2 Mar time: 10  
 Had legit Mar time: 6  
 Had legit PPA time: 29  
 50

# 2011 Marathon

## Actual Time

Time	F1 Vet	F1 New	F1	F2 Vet	F2 New	F2	Combined
3:30:00							
3:40:00	1		1				1
3:50:00							
4:00:00	1		1				1
4:10:00							
4:20:00	3		3				3
4:30:00	2	2	4				4
4:40:00	8	2	10				10
4:50:00	6	1	7		1	1	8
5:00:00	8	1	9		1	1	10
5:10:00	10	4	14		1	1	15
5:20:00	10	2	12	1		1	13
5:30:00	14	2	16				16
5:40:00	20	4	24		2	2	26
5:50:00	14	9	23	1	4	5	28
6:00:00	21	3	24	2	1	3	27
6:10:00	25	10	35	4	4	8	43
6:20:00	20	15	35	2	5	7	42
6:30:00	16	8	24	5	3	8	32
6:40:00	22	2	24	9	6	15	39
6:50:00	13	3	16	8	4	12	28
7:00:00	17	6	23	11	4	15	38
7:10:00	11	12	23	5	3	8	31
7:20:00	6	1	7	10	7	17	24
7:30:00	7	7	14	17	2	19	33
7:40:00	4	4	8	12	7	19	27
7:50:00	2	2	4	19	11	30	34
8:00:00	3	2	5	14	3	17	22
8:10:00	4	2	6	8	9	17	23
8:20:00	2	2	4	8	5	13	17
8:30:00	5	2	7	15	6	21	28
8:40:00		1	1	9	3	12	13
8:50:00	1	1	2	10	7	17	19
9:00:00				9	2	11	11
9:10:00		1	1	4	13	17	18
9:20:00		1	1	13	10	23	24
9:30:00				7	2	9	9
9:40:00	1		1	5	3	8	9
9:50:00				2	2	4	4
10:00:00							
Totals	277	112	389	210	131	341	730
DNF	3	4	7	19	27	46	53
Runners	280	116	396	229	158	387	783

Runners who ran where they were supposed to - Field 1 < 7:00, Field 2 > 7:00

Runners who ran faster than Field 2 times

Runners who ran slower than Field 1 times

559 76.6%

64 8.8%

107 14.7%

### Breakdown:

Had legit Mar time: 54  
 Had legit PPA time: 28  
 Had legit PPM time: 25  
 107

