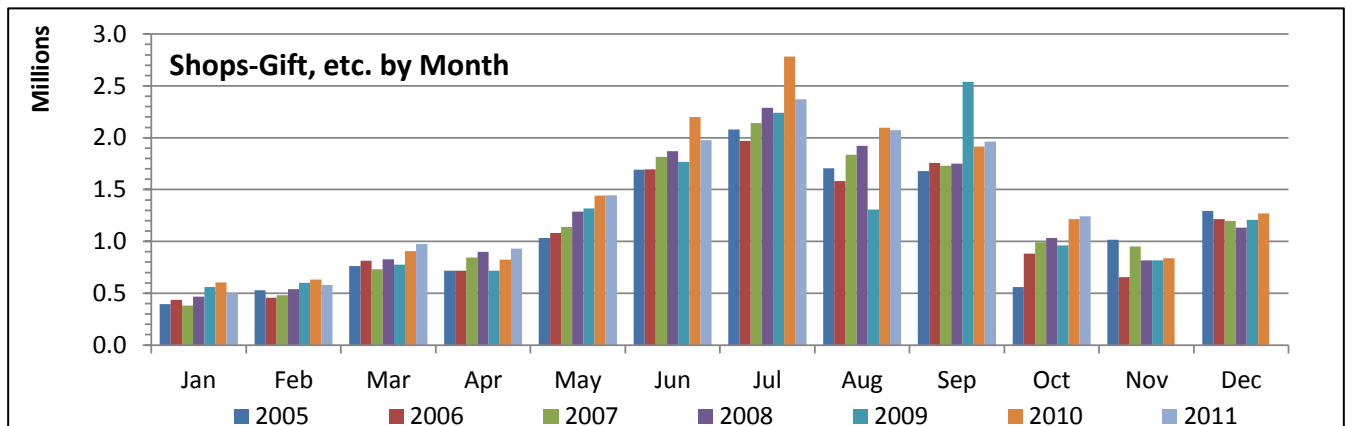
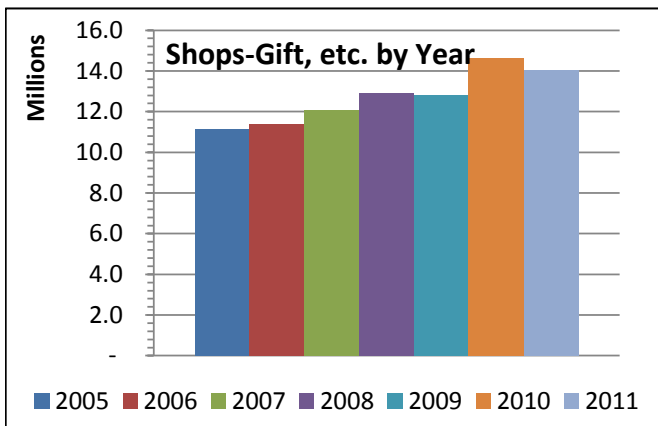
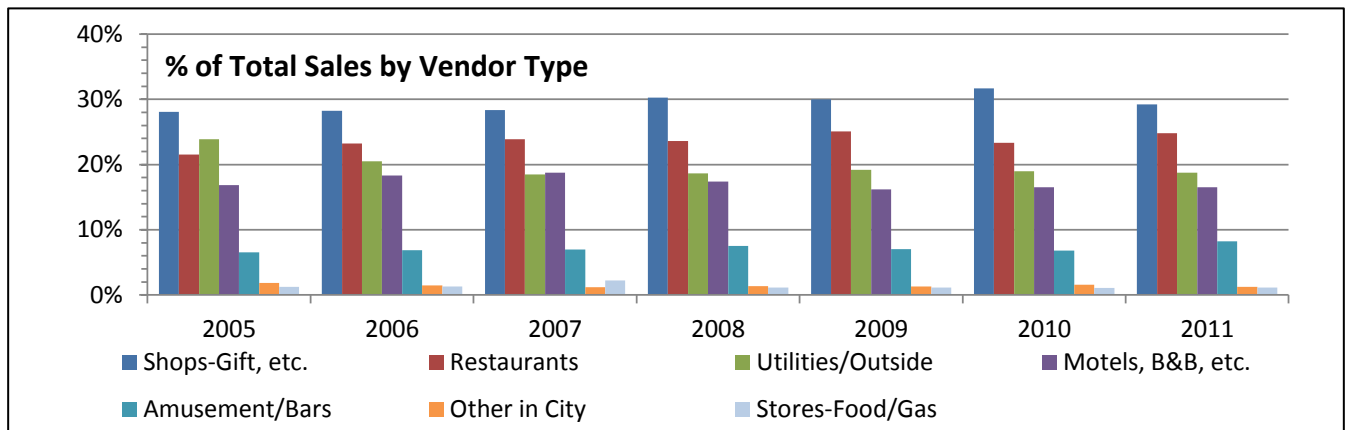
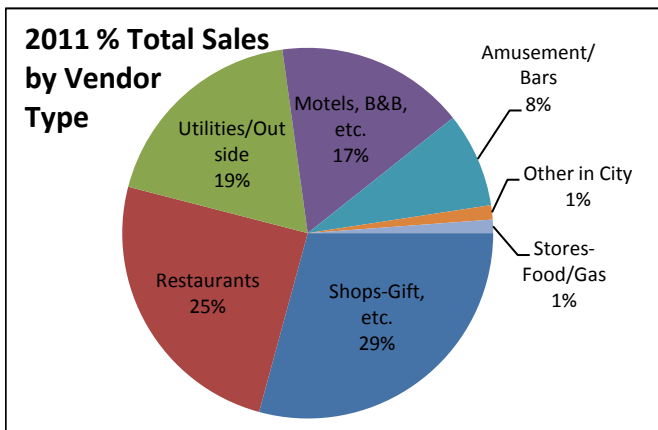
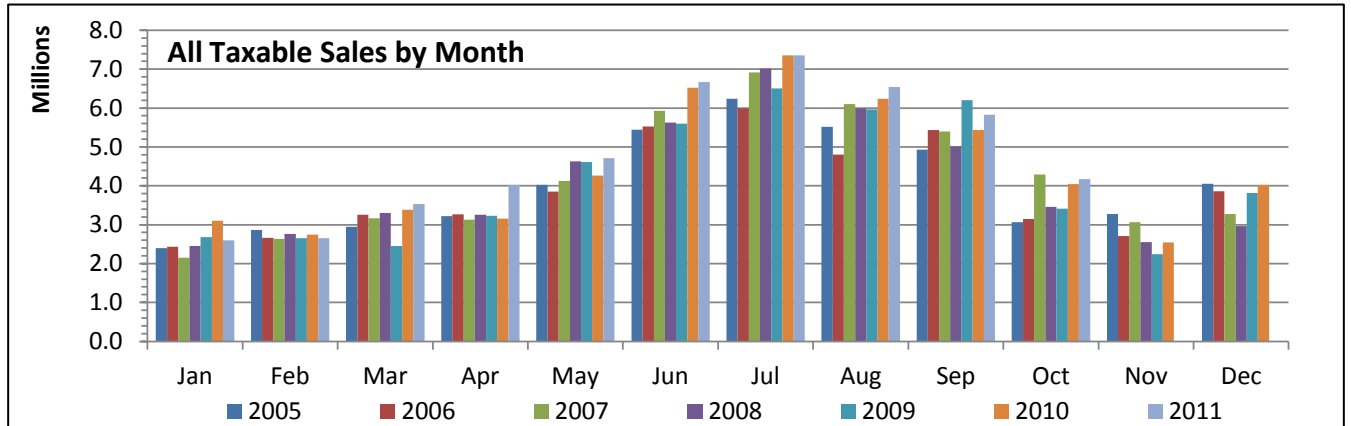
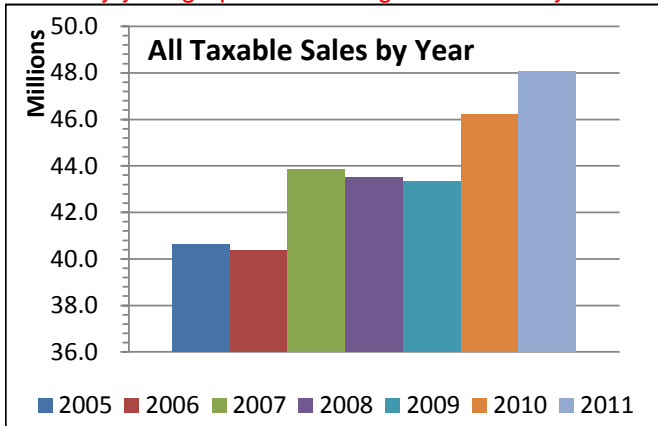
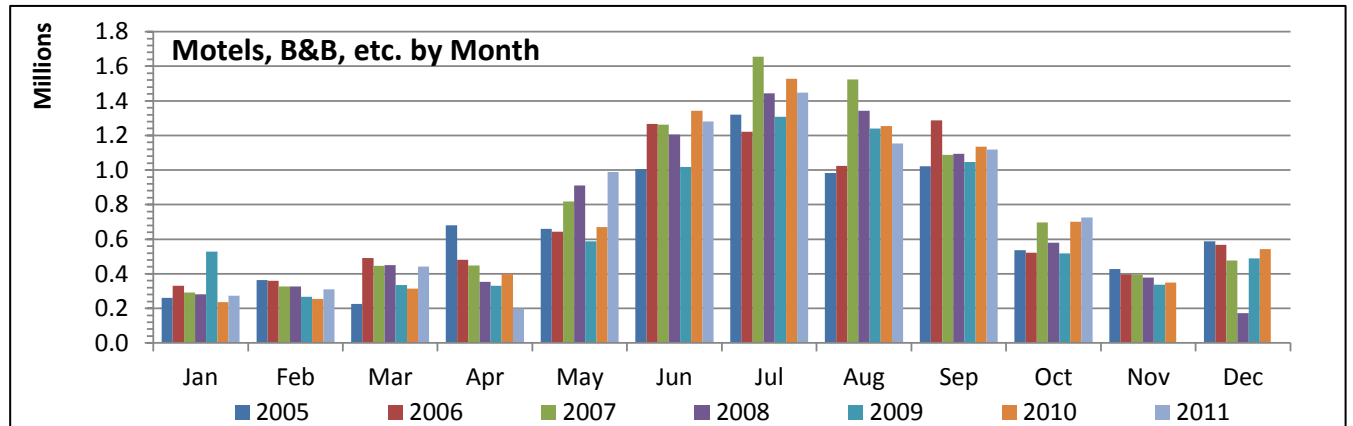
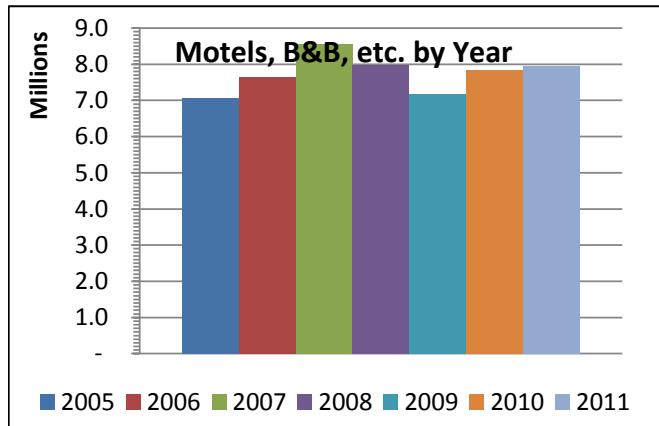
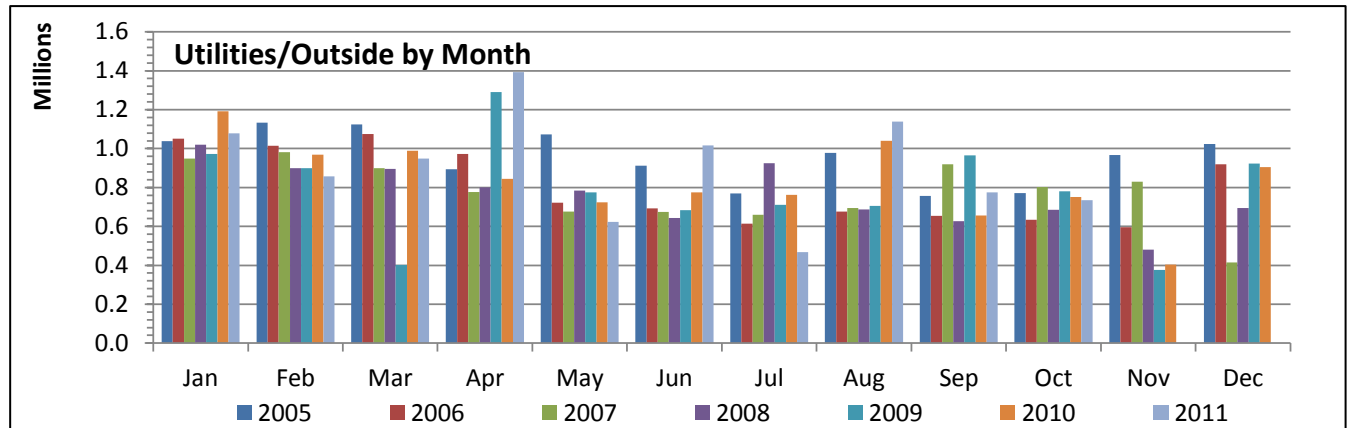
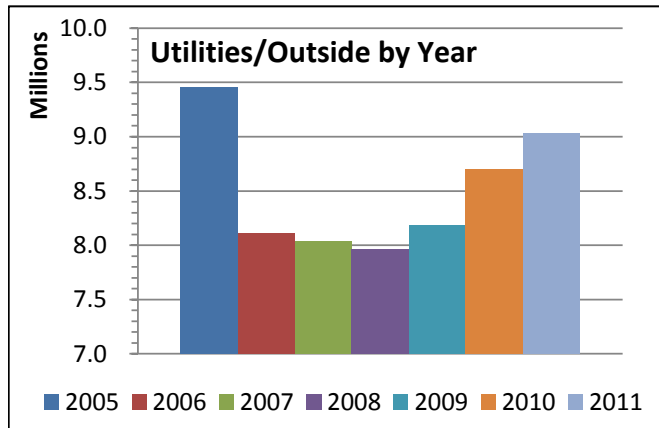
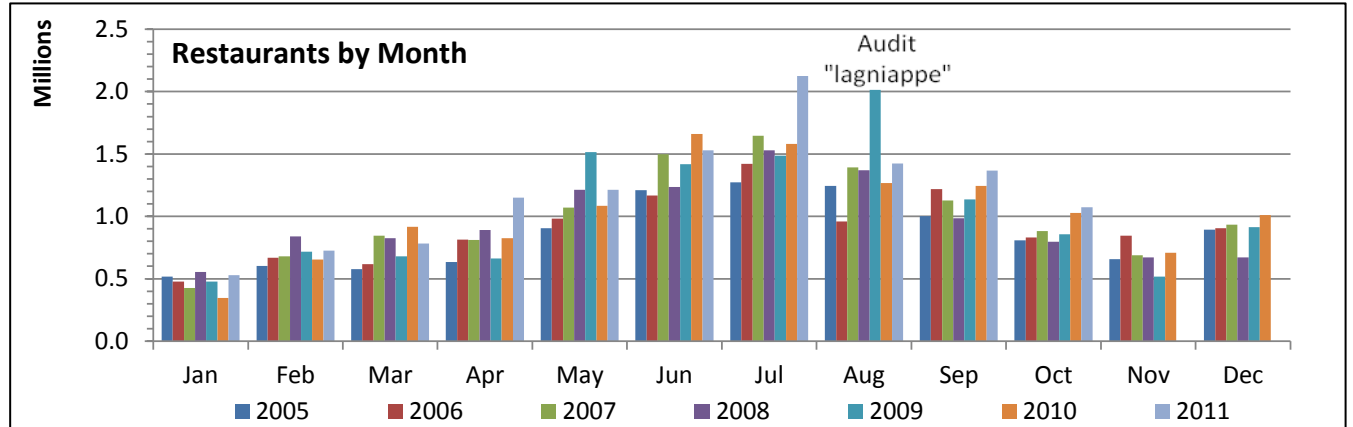
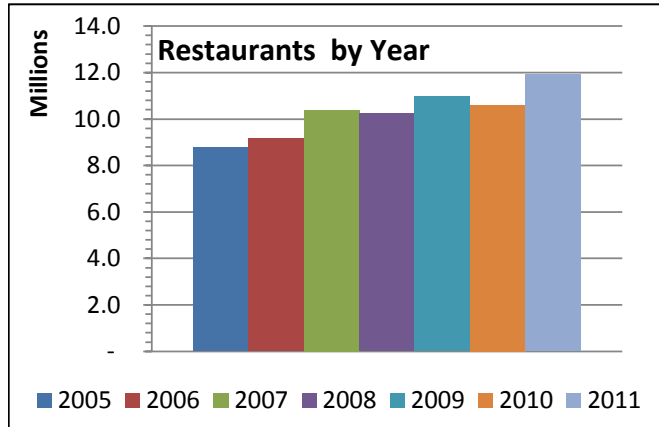


# Manitou Springs Taxable Sales for January 2005 - October 2011

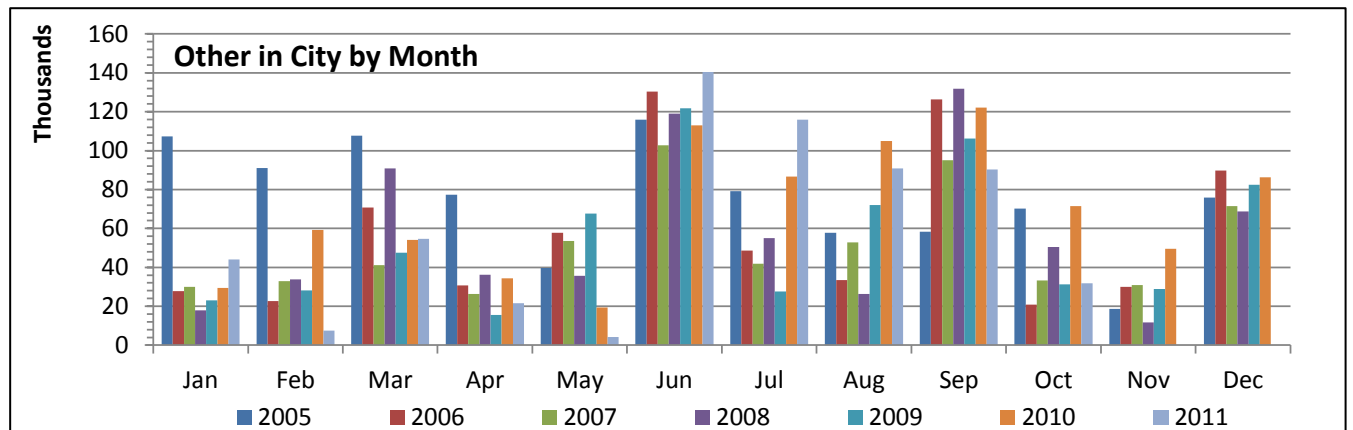
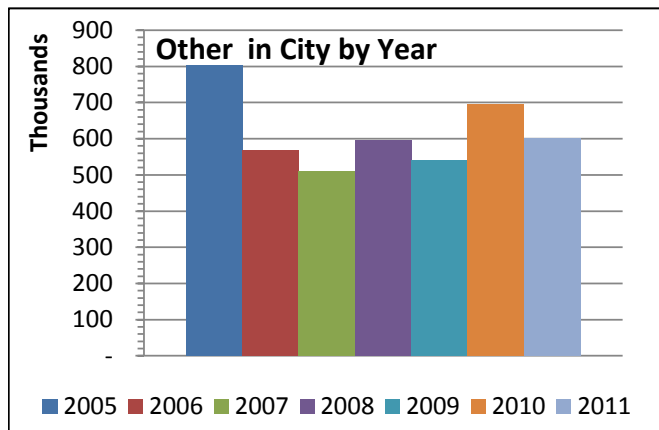
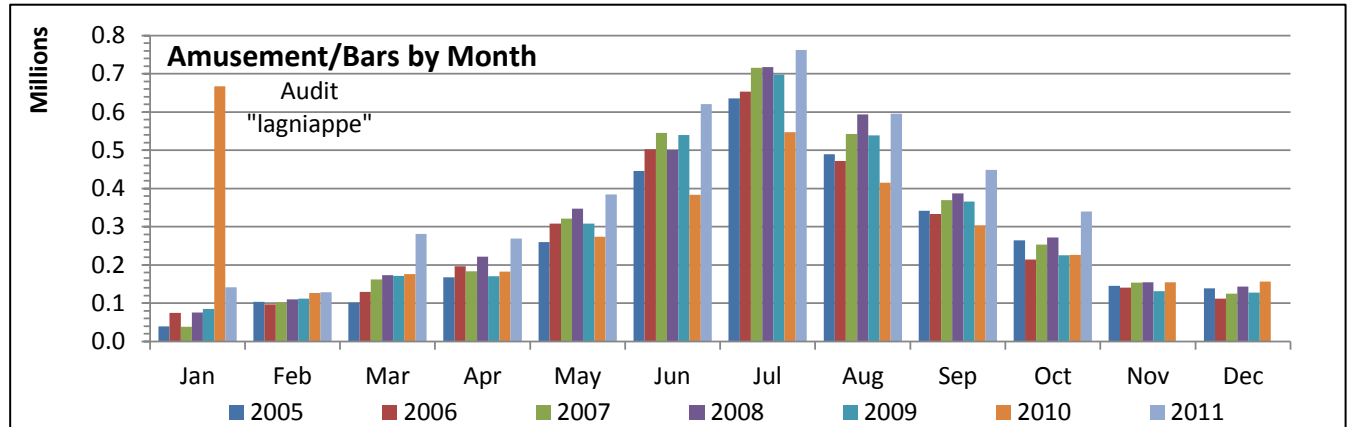
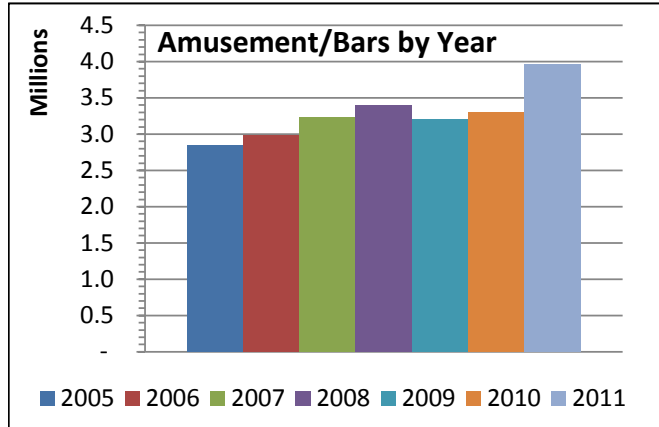
Note: By year graphs are through October only!!!



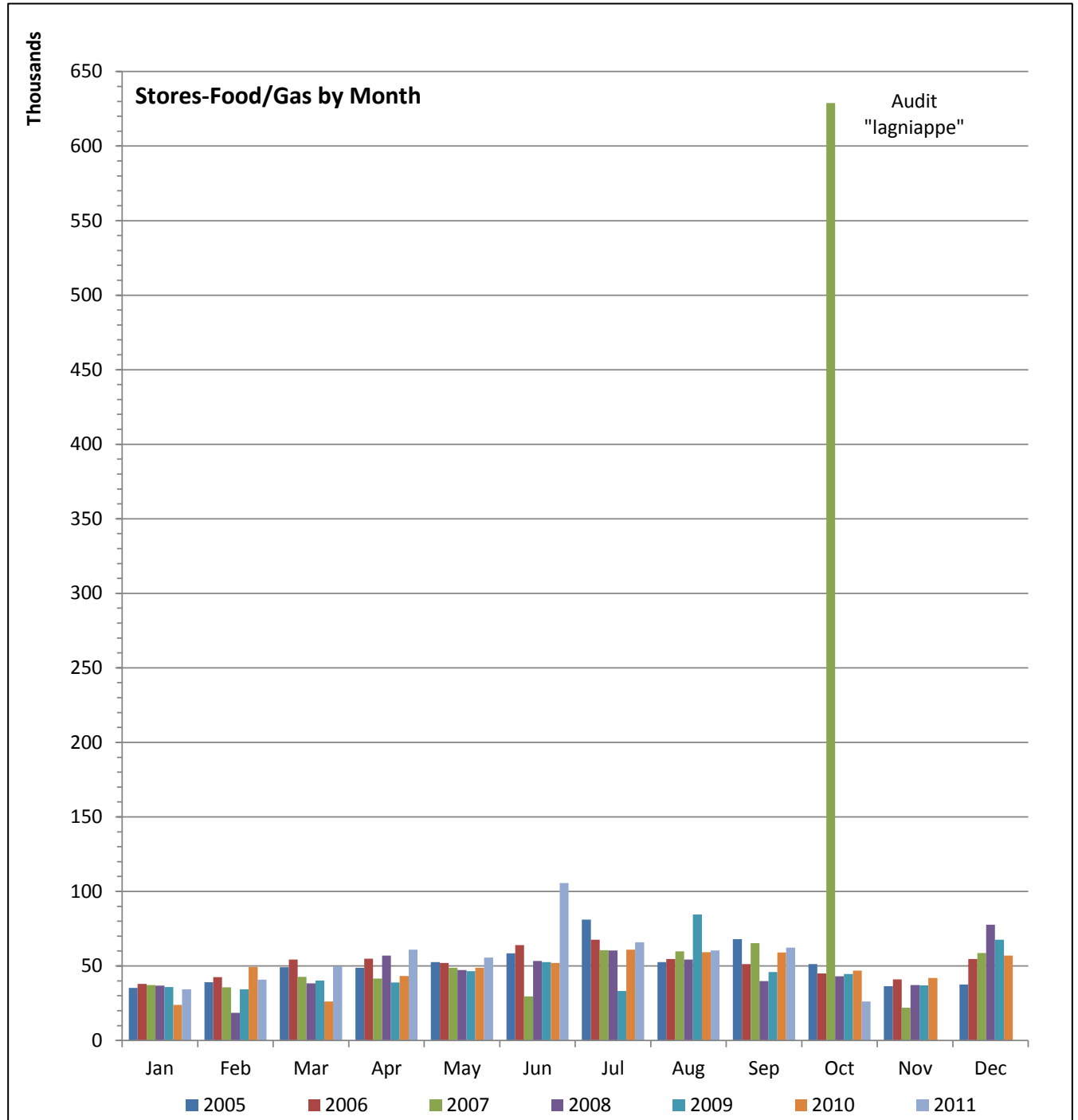
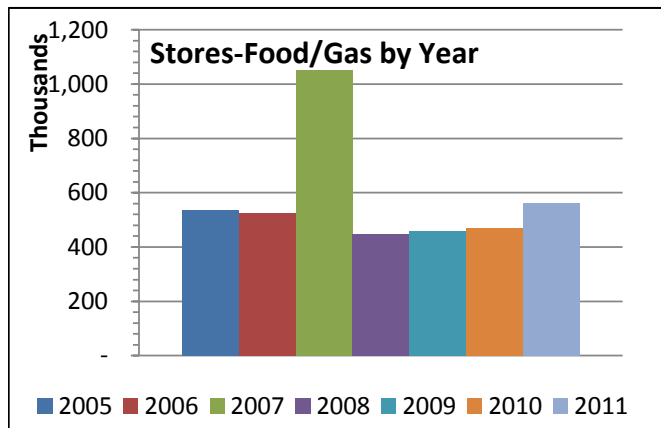
# Manitou Springs Taxable Sales for January 2005 - October 2011



# Manitou Springs Taxable Sales for January 2005 - October 2011



# Manitou Springs Taxable Sales for January 2005 - October 2011



[www.skyrunner.com/council/](http://www.skyrunner.com/council/)